

Logan Health Laboratory Hematology Department

Labeling Guidelines for Hematology Specimens

GOOD LABELS SPEED LABORATORY RESULTS!

The LH Laboratory relies on automated Hematology equipment to speed results back to our physicians. This automated equipment depends on the precise placement of each specimen label to process these items quickly.

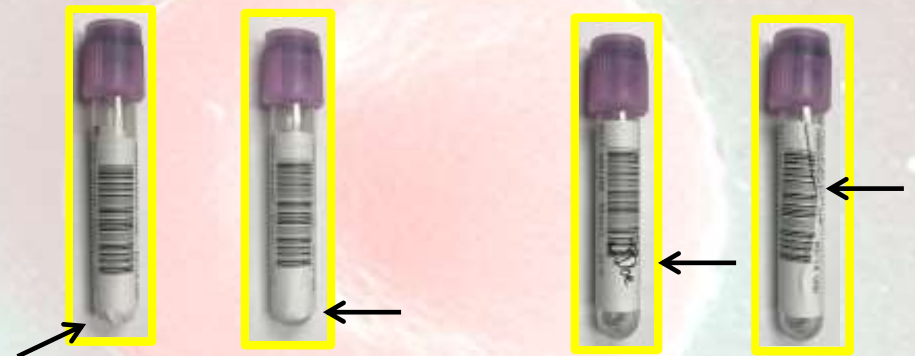


This label is straight, has a clean barcode and has nothing extra hanging off of the tube.

This label does not extend into the curve of the tube.

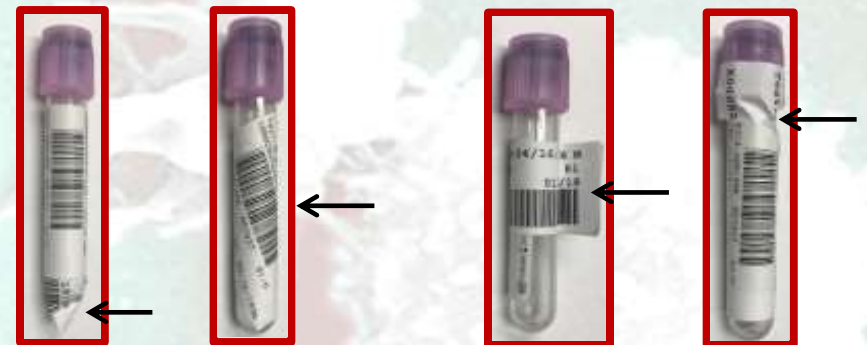
Accurate Specimen Labeling = Timely Results

BAD LABELS DELAY LABORATORY RESULTS!



CAUTION!
These labels extend into the curve of the tube and will cause unit handling problems.

CAUTION!
These labels are crinkled or have been written over and will cause reading problems.



Warning!
These labels over the curve of the tube and will cause problems and delays.

Warning!
These tubes have incorrect label placement that will interfere with tube reading